

1.3 Megapixel IP Camera



network DynaHawk™ 060 Series

The network DynaHawk™ 060 series IP Camera features a 1.3 Megapixel CCD that delivers unparalleled image quality. Utilizing progressive scan CCD sensor, it reproduces images of rapid moving objects with minimum motion blurring. Dual streaming enables users to view both MJPEG images and MPEG-4 video to achieve superior image quality and conserve bandwidth. Boasting resolution up to 1280x960, users can monitor critical areas with greater detail like never before. The synchronized audio ensures users not only “see” but also “hear” events as they unfold.

Features

- 1/3" Sony Progressive scan CCD / CMOS sensor
- Dual Streaming:
 - * MJPEG – up to 1280x960 @ 15 fps
 - * MPEG-4 – up to 640x480 @ 30 fps
- Day / Night function (ICR)
- Power over Ethernet (802.3af)
- Two-way audio support
- Up to 12x Digital Zoom
- 10/100 Ethernet with RJ-45 connector
- Low light sensitivity 0.2 lux @ F1.2
- Compact size and light weight
- Free bundled CMS software

Progressive Scan

Progressive scan CCD sensor captures the entire scene eliminating pixilated edges of interlaced scan sensor.



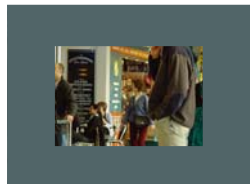
Interlaced scan



Progressive scan

Megapixel Resolution

With the same number of pixels per area, at the highest 1280x960 resolution - the outer rectangle - covers a four times larger area.



Analog Video

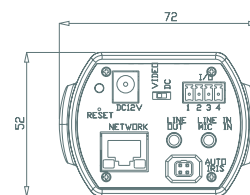
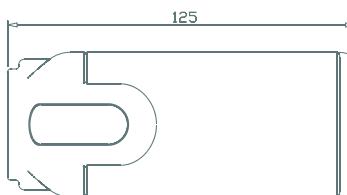


Megapixel

System Configuration



Dimension



Unit: (mm)

Technical Specification

Camera

Image Sensor	1/3" Sony progressive CCD	1/3.8" Sony progressive CMOS
Picture Elements	1280 (H) x 960 (V)	1280(H) x 960 (V)
Resolution	>700 TVL	>700 TVL
Minimum Illumination	0.2 lux @ F1.2	0.6 lux @ F1.2
Shutter Speed	1/15 ~ 1/10000 sec.	1/15~1/15000 sec.
White Balance	Manual / ATW (1500 ~ 15000K)	
Lens	Video drive / DC drive	

Operation

Video Compression	MPEG-4 / MJPEG	
Video Streaming	Simultaneous MPEG-4 and MJPEG video stream (dual stream)	
Resolution	MPEG-4: VGA, QVGA, CIF, QCIF MJPEG: 4VGA (1280x960), VGA	
Frame Rate	MPEG-4 30fps @ VGA, MJPEG 15fps @1280x960	
Image Setting	Brightness	Manual
	Exposure	Auto / Manual
	Sharpness	Manual
	Contrast	Manual
	White Balance	Auto / Manual / Indoor / Outdoor
	Digital Zoom	1x ~ 12x
Audio	Rotation	Flip, Mirror, and 180° Rotate
	Two-way Audio	Line out, Line in/mic in
	Compression	G.711 / G.726
Alarm	Input	5V 10kΩ pull up input
	Output	Photocoupler transistor output

Network

Interface	10/100 Ethernet (RJ-45)
Protocol	TCP/IP,UDP,RTP,RTSP,HTTP, ICMP, FTP, SMTP, DHCP,and IGMP
Password Levels	User and Administrator
Internet Browser	Internet Explorer (6.0+)
User Account	20

Mechanical

Lens Mounting	C/CS mount	
Connectors	Power	DC Jack
	Ethernet	RJ-45
	Audio	Stereo phone jack, Φ3.5mm
	Alarm	4 pins terminal block, pitch 3.5mm
	Auto Iris	Video drive & DC drive
LED Indicator	Power, Link, ACT	

General

Operating Temperature	0°C ~ 50°C
	Humidity: 10% to 90%, no condensation
Power Source	DC12V
Power Consumption	4.2W (max. 350mA @ DC12V) 3W (max. 250mA @ DC12V)
Dimension	125 x 70 x 52 mm (LxWxH) (w/o lens)
Certificate	CE, FCC, RoHS compliant

*Lens not included

Product Selection

nDH060-□□□□

Sensor Type
3: 1.3M CCD
4: 1.3M CMOS

Lens Type
0: C/CS mount type, w/o D/N
1: C/CS mount type, w/ D/N

Power
1: DC12V
2: PoE & DC12V

Power Plug
1: US plug
2: EU plug